



ZILCO RACING

2019-2020 EQUIPMENT CATALOGUE

IF IT'S BRANDED ZILCO, IT'S BRANDED QUALITY.



zilco.net 





CONTENTS

ZILCO RACING THE WINNING EDGE

With origins in Australia and New Zealand in the early 1960s, the Zilco group is now a pre-eminent supplier of equestrian products worldwide.

Zilco's staff include specialists from a variety of equestrian disciplines. This knowledge and experience, coupled with constant market research, is the driving force for our in-house design team.

Zilco have always been innovators, using modern materials with the latest ideas - all of which are tested extensively before a product is released.

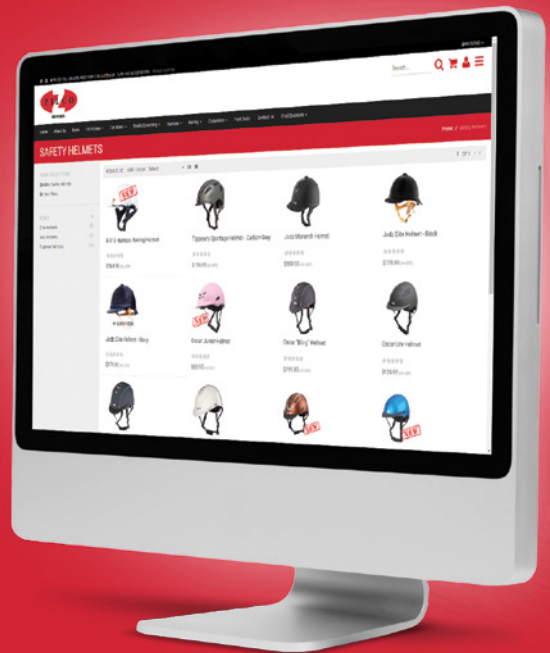
Zilco is committed to quality and customer service, whether for our own designed products or those select quality product from other manufacturers we represent.

Zilco Racing products were introduced over 30 years ago. The comprehensive range of saddles, bridles, reins, breastplates, girths, bits, hoods, goggles and accessories have gained a worldwide reputation for consistent quality and reliability. The range is designed with the intention of giving jockeys and trainers the winning edge.

Bridles	4
Nosebands & Covers	10
Reins	11
Race Hoods	14
Bits	16
Bit Accessories	20
Saddles	22
Girths & Surcingles	26
Breastplates	30
Martingales	31
Stirrups	34
Stirrup Straps	36
Headstalls & Leads	38
Chains	39
Pads	40
Horse Boots	42
Wraps	44
Helmets	45
Goggles & Gloves	46
Whips & Gear	47

EVERYTHING YOU NEED, IN ONE PLACE!

Visit us online at www.zilco.net





NEW

Epsom
Bridles and Cavessons

Made from soft PN strapping with a modern matt finish, enjoy a more traditional appearance, as well as all the strength, longevity and ease of maintenance benefits that this material offers. One size to fit Thoroughbreds.

	Bridle	Cavesson	Bridle & Cavesson
● Black	672801	673201	672851
● Brown	672803	673203	672853
● Red	672807	673207	672857
● White	672808	673208	672858
● Royal Blue	672812	673212	672862

Epsom Range

The Epsom is a classic, English style race bridle and cavesson combination, with plain narrow brow and wide cavesson noseband.



NEW



**Training
Bridle & Cavesson - Dark Brown**

Made from 12mm (1/2") synthetic strapping that is softer on the hands and has a matt finish resulting in a more leather-like appearance. The cavesson has a 25mm (1") nose, that is fully lined, and features soft, colour coordinated keepers with stainless steel fittings.

Bridle	Cavesson	Bridle & Cavesson
672663	673103	672683

**Training Hanoverian
Noseband - Dark Brown**

Made from 12mm (1/2") synthetic strapping that is softer on the hands and has a matt finish resulting in a more leather-like appearance. One size to fit Thoroughbreds.

673303



**Training Grackle
Noseband**

Grackle Nosebands offer similar benefits as a drop noseband, but are less constrictive to the horse's breathing because the nose pressure is localised higher up the face.

673553



Training Range

The Training range of products offer the look that traditionalists prefer, with all the benefits of synthetic materials for which Zilco is so renowned.





Stainless Steel Race Bridles

This lightweight model features a lined headpiece, stainless steel rosettes and 13mm (1/2") cheek straps. In 9 colours with White or Black trim on brow.

	White Trim	Black Trim
● Black	672281	672301
● Navy	672282	672302
● Brown	-	672303
● Yellow	-	672304
● Dark Green	-	672305
● Purple	-	672306
● Red	672287	672307
○ White	672288	672308
● Royal Blue	-	672312

Stainless Steel Race Bridles & Rein Sets

This set comprises our lightweight Race bridle, with a set of matching Loop or Buckle end reins.



	White Loop Reins	White Buckle Reins	Black Loop Reins	Black Buckle Reins
● Black	672391	672411	672331	672361
● Navy	672392	672412	672332	672362
● Brown	-	-	672333	672363
● Yellow	-	-	672334	672364
● Dark Green	-	-	672335	672365
● Purple	-	-	672336	672366
● Red	672397	672417	672337	672367
○ White	672398	672418	672338	672368
● Royal Blue	-	-	672342	672372



**Padded
Bridles and Cavessons**

Suitable for race, exercise and general riding. Waffle padded head, brow and nose with 16mm cheeks and stainless steel buckles. The bridle may be used with or without the Cavesson.

- Black
- Dark Blue
- Brown
- Red
- Royal Blue

Bridle	Cavesson	Bridle & Cavesson
672481	673041	672531
672482	673042	672532
672483	673043	672533
672487	673047	672537
672492	673052	672542



Exercise Bridle

Featuring a padded, lined headpiece, and 16mm (5/8") cheek straps. Smooth, matt finish material.

- Black 672511
- Brown 672513



Brass Buckle Race Bridle

Featuring a padded headpiece, solid brass rosettes, and swage buckles for a more traditional look, and 13mm (1/2") cheek straps.

- Black 672601
- White 672608



Rosette Race Bridles

Featuring stainless steel rosettes and 13mm (1/2") cheek straps. Coloured with Black or White Trim on the brow.

- Black
- Dark Blue
- Royal Blue
- Red
- White

Black Trim	White Trim
672771	-
-	672752
-	672754
-	672757
-	672758

Race Cavesson Noseband

This lightweight cavesson noseband is made from 13mm (1/2") material and is available in colours to suit most race/exercise bridles in our range.

Available in colours with White or Black trim on brow.

	White Trim	Black Trim
● Black	673001	673021
● Dark Blue	673002	-
● Brown	-	673023
● Yellow	-	673024
● Dark Green	-	673025
● Purple	-	673026
● Red	673007	673027
○ White	673008	673028
● Royal Blue	673012	673032



Race Hanoverian Noseband

Made from 13mm (1/2") material and has a padded trim on the nose for improved comfort. One size to fit Thoroughbreds.

● Black	673421
○ White	673408



Rubber Figure 8 Noseband

Formed from one piece of rubber, this model has just enough stretch to make it easy to fit. Zilco's coated webbing headpiece with stainless steel buckle. Black only.

673501



Race Shadow Roll

A system where the race cavesson can be fitted with a fleece cover to create a shadow roll. Includes the Race Cavesson noseband and removable fleece roll.

● Black	671571
○ White	671578



Fleece Cheeks Covers Pair

Soft synthetic fleece that fits onto the cheek straps of the bridle to form a shadow roll, keeping the horse's vision focused forward. 22cm long.

● Black	521101
● Blue	521102
● Yellow	521104
● Red	521107
○ White	521108



Shadow Roll Pair

Wool or synthetic fleece that fits onto the cheek straps of the bridle to form a shadow roll, used in training young and nervous horses. 28cm long.

Synthetic	671550
Wool	671560

Shadow Roll Fleece Cover

Fleece cover with touch tape closure. Simply wraps around a standard Zilco race cavesson - converting it instantly to a shadow roll.

● Black	671601
○ White	671608




NEW

19mm PN Reins

Loop Ends

Made from 19mm (3/4") wide soft-to-the-touch PN material, designed to match the Training Range and Epsom Bridles. Featuring 61cm (24") small pimple rubber grips. 145cm (57") Overall length.






-  Black/Black 676421
-  Brown/Orange 676423
-  Red/Black 676427
-  White/White 676428
-  Royal/Black 676432

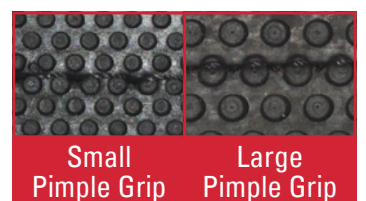


19mm PN Reins

Buckle Ends

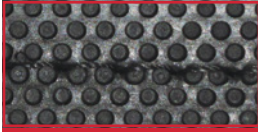
Made from 19mm (3/4") wide soft-to-the-touch PN material, designed to match the Training Range and Epsom Bridles. Featuring 61cm (24") for small and 78cm (30") for large pimple rubber grips. 145cm (57") Overall length.

- | | Small Pimples | Large Pimples |
|--|---------------|---------------|
|  Black/Black | 676401 | - |
|  Brown/Orange | 676403 | 676443 |
|  Red/Black | 676407 | - |
|  White/White | 676408 | - |
|  Royal/Black | 676412 | - |



Note: It is the purchaser's responsibility to ensure the product they select is approved for use by the organisation under which they operate.

REINS



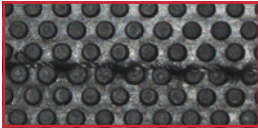
Small Pimple Grip

16mm Reins

Loop Ends

Made from 16mm (5/8") wide webbing. Featuring 61cm (24") small pimple rubber grips. 145cm (57") Overall length.

	White Grips	Black Grips
● Black	676281	676301
● Navy	676282	676302
● Brown	-	676303
● Yellow	-	676304
● Dark Green	-	676305
● Purple	-	676306
● Red	676287	676307
○ White	676288	676308
● Royal Blue	676292	676312



Small Pimple Grip

16mm Reins

Buckle Ends

Made from 16mm (5/8") wide webbing. Featuring 61cm (24") small pimple rubber grips. 145cm (57") Overall length.

	White Grips	Black Grips
● Black	676161	676181
● Navy	676162	676182
● Brown	-	676183
● Yellow	676164	676184
● Dark Green	-	676185
● Purple	-	676186
● Red	676167	676187
○ White	676168	676188
● Royal Blue	676172	676192



Note: It is the purchaser's responsibility to ensure the product they select is approved for use by the organisation under which they operate.

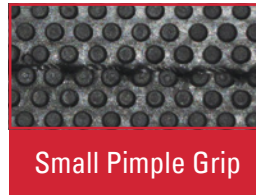
REINS



- Black 676221
- Dark Blue 676222
- Brown 676223
- Purple 676226
- Red 676227
- Royal Blue 676232

19mm Reins Buckle Ends

Made from 19mm (3/4") wide webbing. Featuring 61cm (24") small pimple rubber grips. 145cm (57") Overall length.



Small Pimple Grip



Rubber Rein Stops

21mm Slot. Sold as a pair.

196510

19mm Reins Loop Ends

Made from 19mm (3/4") wide webbing. Featuring 61cm (24") small pimple rubber grips. 145cm (57") Overall length. Black only.

- Black 676341



Small Pimple Grip

19mm Reins Long Grip

Made from 19mm (3/4") wide webbing, with buckle ends for connection to the bit. Featuring 78cm (30") large pimple rubber grips. 145cm (57") Overall length. Black only.

- Black 676261



Large Pimple Grip

19mm Brass Reins Buckle Ends

Made from 19mm (3/4") wide webbing, with brass buckle ends for connection to the bit. Featuring 61cm (24") small pimple rubber grips. Overall length: 145cm (57"). Black only.

- Black 676601



Small Pimple Grip

Note: It is the purchaser's responsibility to ensure the product they select is approved for use by the organisation under which they operate.

RACE HOODS

Airlite Race Hood

Airlite is a very light nylon mesh with some stretch, that allows full air circulation. All hoods in the Airlite range are fastened with clips and elastic straps under the neck.



	A	B	C
	Full Cup	Half Cup	Mesh Cup
● Black	671031	671041	671051
● Blue	671032	671042	671052
● Red	671037	671047	671057

Stretch Race Hood

Made from 4-way stretch spandex/elastane material. The hoods are fastened with clips under the neck, which include touch-tape straps for extra adjustment.



	A	B	C
	Full Cup	Half Cup	Mesh Cup
● Black	671071	671081	671091
● Blue	671072	671082	-
● Red	671077	671087	-

Neoprene Ears Race Hood

Made from 4-way stretch elastane material for a close fit. Fastened with clips and elastic straps under the neck. Neoprene ears help cut back noise.



	A	B	C
	Plain	Half Cup	Mesh Cup
● Black	671111	671131	671151
● Red	671117	-	-

NEW

Note: It is the purchaser's responsibility to ensure the product they select is approved for use by the organisation under which they operate.



BITS



(A)



(F)



(K)



(B)



(G)



(L)



(C)



(H)



(M)



(D)



(I)



(E)



(J)



(N)

	Product	Code	Mouth Size	Mouth Thickness	Ring Size
A	Copper Mouth Dee Bit	121010	12.5cm/5"	12mm	65mm
B	Copper Roller Dee Bit	121015	12.5cm/5"	13mm	60mm
C	Large Dee Bit	121020	12.5cm/5"	16mm	70mm
D	Light Mouth Dee Bit	121025	12.5cm/5"	12mm	75mm
E	Medium Mouth Dee	121030	12.5cm/5"	12mm	65mm
		121035	14cm/5 1/2"	12mm	65mm
F	Rubber Mullen Mouth Dee Bit	121040	12.5cm/5"	20mm	65mm
G	Rubber Jointed Mouth Dee Bit	121045	12.5cm/5"	20mm	65mm
H	Sweet Iron Dee	121066	12.5cm/5"	12mm	65mm
I	Regular Mouth Dee Bit	121085	12.5cm/5"	14mm	75mm
J	Thick Mouth Hollow Dee	121090	12.5cm/5"	20mm	65mm
K	Curved Mouth Dee Bit	121095	12.5cm/5"	10mm	45mm
L	AC Lugging Bit	122210	11.5cm/4 1/2"	12mm	65mm
M	Brad Lugging Bit	122215	12.5cm/5"	12mm	65mm
N	JR Lugging Bit	122220	12.5cm/5"	12mm	65mm

Note: It is the purchaser's responsibility to ensure the product they select is approved for use by the organisation under which they operate.



A



B



C



D



E



F



G



H



I



J



K



L



M



N

Product	Code	Mouth Size	Mouth Thickness	Ring Size
A Jointed Dexter (Small Links)	122227	12.5cm/5"	13mm	45mm
B Jointed Dexter (Large Links)	122230	12.5cm/5"	13mm	45mm
C Dexter Snaffle Rubber Mouth	122231	12.5cm/5"	21mm	45mm
D Dexter Snaffle with Tongue Control	122232	12.5cm/5"	12mm	45mm
E Dexter Snaffle with Copper Mouth	122234	12.5cm/5"	13mm	45mm
F White Mouth Dexter Snaffle	122256	12.5cm/5"	12mm	45mm
G JR Lugging Bit (Leather Covered)	122316	12.5cm/5"	16mm	65mm
H Butterfly Lugging Bit	122503	11.5cm/4 1/2"	15mm	-
	122505	12.5cm/5"	15mm	-
I Controller Bit	122515	12.5cm/5"	7mm	65mm
J Crescendo Bit	122518	11.5cm /4 1/2"	-	45mm
	122520	12.5cm/5"	-	45mm
K Half Spoon Dr Bristol	122525	12.5cm/5"	13mm	108mm
L Half Spoon Dexter Bit	122545	12.5cm/5"	13mm	108mm
	122547	14cm/5 1/2"	13mm	108mm
M Norton Bit	122575	12.5cm/5"	13mm	65mm
N Mullen Mouth Regulator Bit	122580	12.5cm/5"	13mm	65mm

Note: It is the purchaser's responsibility to ensure the product they select is approved for use by the organisation under which they operate.

BITS



Product	Code	Mouth Size	Mouth Thickness	Ring Size
A Tongue Control Eggbutt	123104	11.5cm/4 1/2"	13mm	50mm
	123106	12.5cm/5"	13mm	50mm
B Dr Bristol Bit	123120	12.5cm/5"	15mm	70mm
C French Mouth Eggbutt	123144	11.5cm/4 1/2"	14mm	70mm
	123146	12.5cm/5"	14mm	70mm
	123148	14cm/5 1/2"	14mm	70mm
D Eggbutt - Light Round Ring	123176	12.5cm/5"	15mm	70mm
	123178	14cm/5 1/2"	15mm	70mm
E Hollow Mouth Eggbutt	123221	12.5cm/5"	23mm	70mm
	123222	14cm/5 1/2"	23mm	70mm
F Thick Mouth Eggbutt	123226	12.5cm/5"	18mm	70mm
	123228	14cm/5 1/2"	18mm	70mm
G Thin Mouth Eggbutt	123234	11.5cm/4 1/2"	15mm	70mm
	123236	12.5cm/5"	15mm	70mm
	123238	14cm/5 1/2"	15mm	70mm
H Twisted Mouth Eggbutt	123246	12.5cm/5"	13mm	70mm
I TPU Mullen Mouth Ring Snaffle	123906	12.5cm/5"	15mm	65mm
	123908	14cm/5 1/2"	15mm	65mm
J Flexible Rubber Ring Snaffle	123914	12cm/4 3/4"	21mm	65mm
	123916	13cm/5 1/4"	21mm	65mm
K Hollow Mouth Ring Snaffle	123936	12.5cm/5"	19mm	65mm
	123937	13.5cm/5 1/4"	19mm	65mm
	123938	14cm/5 1/2"	19mm	65mm
L Curved Mouth Snaffle	123996	12.5cm/5"	10mm	65mm
	123998	14cm/5 1/2"	10mm	65mm

Note: It is the purchaser's responsibility to ensure the product they select is approved for use by the organisation under which they operate.



	Product	Code	Mouth Size	Mouth Thickness	Ring Size
A	Large Ring Snaffle	124016	12.5cm/5"	18mm	90mm
B	Springsteen Bit	124036	12.5cm/5"	17mm	50mm
C	French Mouth Ring Snaffle	124104	11.5cm/4 1/2"	13mm	70mm
		124106	12.5cm/5"	13mm	70mm
		124108	14cm/5 1/2"	13mm	70mm
D	Thick Mouth Training Snaffle	124154	11.5cm/4 1/2"	21mm	65mm
		124156	12.5cm/5"	21mm	65mm
		124158	14cm/5 1/2"	21mm	65mm
E	Gold Training Snaffle	124166	12.5cm/5"	21mm	65mm
		124168	14cm/5 1/2"	21mm	65mm
F	Tongue Control Ring Snaffle	124206	12.5cm/5"	12mm	65mm
	Product	Code		Size	
G	Gold Chifney Bit	131710		Pony	
		131715		Cob	
H	Anti Rearing Bit - Stainless Steel	131010		Pony	
		131015		Cob	
I	Anti Rearing Bit - Gold	131020		Pony	
		131025		Cob	
J	Anti Rearing Bit - Nickel Plate	131035		Cob	
K	Stainless Steel Tongue Clip	132510		One Size	

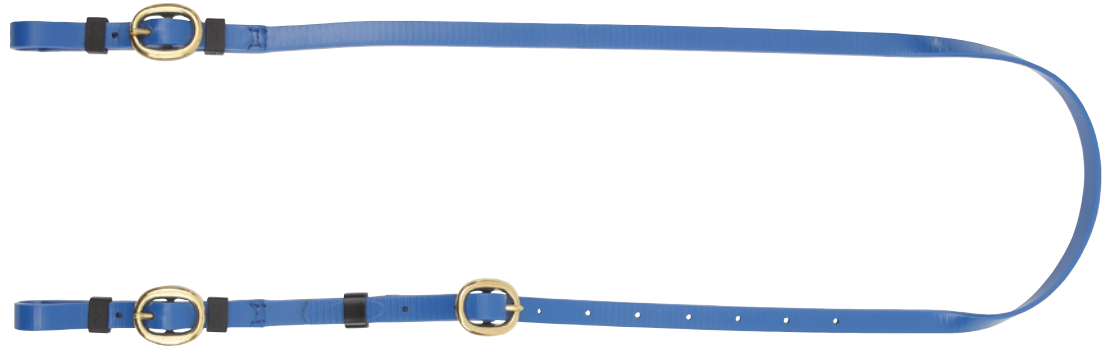
Note: It is the purchaser's responsibility to ensure the product they select is approved for use by the organisation under which they operate.

BIT ACCESSORIES

Anti Rearing Strap Brass Buckle Ends

PVC anti rearing bit strap and brass buckles and fittings.

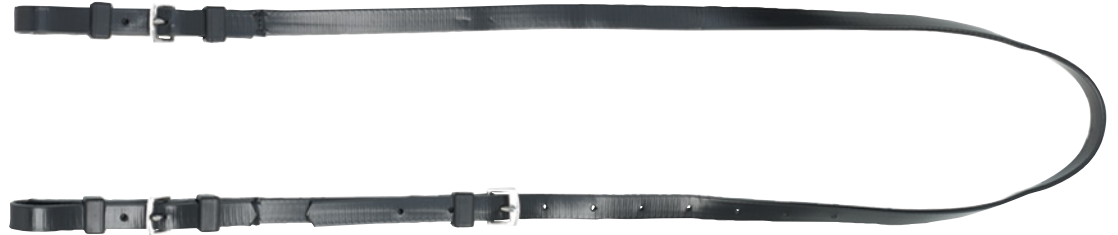
- Black 132041
- Dark Blue 132042
- Red 132047
- White 132048
- Royal Blue 132052



Anti Rearing Strap Buckle Ends

Synthetic anti rearing bit strap and stainless steel fittings.

- Black 132020
- White 132025



Anti Rearing Strap Loop Ends

Synthetic anti rearing bit strap and stainless steel fittings.

- Black 132030
- White 132035



Anti Rearing Set

Black Anti Rearing Strap Loop Ends with Anti Rearing Bit in Stainless Steel or Nickel Plate.

Anti Rearing Bit
Stainless Steel (Cob Size)
131540

SET



With Anti Rearing Bit
Nickel Plate (Cob Size)
131550

SET



Tongue Clip Headstrap

Black synthetic strap with stainless steel fittings. Available alone or with Tongue clip as a set.

- Strap Only 132520
- Set 132515



Buckle Attachment

Buckle attachment used to connect bit lifters or rubber cheekers to the bridle head. Sold as each.

- Black 133931
- White 133938



Synthetic Curb Strap

Designed to prevent the bit from pulling through the horse's mouth.

132521



Synthetic Chin Strap

Made from padded polyurethane and coated webbing.

532610



Elastic Bit Lifter 13mm

Holds the bit high in the mouth to prevent the horse getting it's tongue over the bit. Made from 13mm (1/2") coated webbing with elastic. Available alone or as set with Buckle Attachment.

	Alone	Set
● Black	133611	-
○ White	133618	133610

Elastic Bit Lifter 25mm

Holds the bit high in the mouth to prevent the horse getting it's tongue over the bit. Made from 25mm (1") elastic.

● Black	133641
● Brown	133643

Rubber Cheekers

Designed to hold the bit high in the horse's mouth to prevent the horse from getting it's tongue over the bit. Alone or as set with Buckle Attachment.

	Alone	Set
● Black	133921	133911
● Brown	133923	-
○ White	133928	133918

Soft Gel Curb Chain Cover

Designed to help prevent chafing of the horse's chin.

132530



Rubber Band Tongue Tie

Prevent the horse from putting its tongue back in its mouth and shutting off the airway.

136515



Rubber Tongue Layer

Designed to prevent the horse from getting its tongue over the bit.

136520



Plastic Bit Burr 9cm Diameter

Used for horses that refuse to turn to one side or hang to one side.

532805



Soft Gel Bit Guards

Easy to fit, offer a soft alternative to traditional bit guard designs.

132532



Bit Clips Nickel Plated

Pair of nickel plated clips to attach the bit to the halter.

547230



Bit Clips Brass Plated

Pair of brass plated clips to attach the bit to the halter.

547232



**Full Tree
Exercise Saddle
With Open Stirrup Bar**

Designed for regular track work, but also suitable for racing and point-to-point.

- Conventional Stirrup Bar with Quick Release safety catch
- 22mm (7/8") Chrome Leather Billet Straps
- Gusseted flock filled panel
- Weight 3.5kg

- Black 686181
- Brown 686183



Quick Release Safety Catch



Replacement Girth Billet

Made to suit the Full Tree Exercise Saddle.

686110



**Full Tree
Exercise Saddle
With Closed Stirrup Bar**

Girth billets can be removed and replaced as needed without time consuming and costly visits to the saddler for repair.

- Closed Stirrup Bar
- 22mm (7/8") Chrome Leather Billet Straps
- Gusseted flock filled panel
- Weight 2.5kg approx

- Black 686201
- Blue 686202
- Brown 686203



Closed Stirrup Bar

Note: It is the purchaser's responsibility to ensure the product they select is approved for use by the organisation under which they operate.



Half Tree
Exercise Saddle

Designed to conform to the horse's back, eliminating "bridging" that can sometimes be experienced with full trees.

- Conventional stirrup bar with quick release safety catch
- 22mm (7/8") Chrome Leather Billet Strap
- Weight 2.9 kg approx

- Black 686231
- Brown 686233



Quick Release Safety Catch



Full Tree
Exercise Saddle - Suede

Hard to tear material with tremendous abrasion resistance, while the suede-like finish assists with maintaining grip.

- Closed Stirrup Bar
- 22mm (7/8") Chrome Leather Billet Straps
- Gusseted flock filled panel
- Weight 3.15kg approx

- Black 686211



Closed Stirrup Bar

Note: It is the purchaser's responsibility to ensure the product they select is approved for use by the organisation under which they operate.



NEW

185g Race Saddle

Ultra-light race saddle built on a newly designed, formed plastic tree with steel reinforced gullet. Featuring 600 denier cordura fabric for durability, with patent finish binding, matching stitch lines and non-slip rubber lining.

- Closed Stirrup Bar
- Seat Length 28cm (11")
- 16mm patent girth points with webbing reinforcement
- Weight 185g approx

- Black 686701
- Blue 686702
- Red 686707
- White 686708

Note: All weights are approximate and may vary.

350g Patent Race Saddle

- Closed Stirrup Bar
- Seat Length 31cm (12 1/4")
- 16mm (5/8") Billet strap
- Weight 350gm approx

- Black 686811
- Blue 686812
- Red 686817



500g Patent Race Saddle

- Closed Stirrup Bar
- Seat Length 36cm (14")
- 19mm (3/4") Billet strap
- Weight 500gm approx

- Black 686821
- Blue 686822
- Red 686827



750g Patent Race Saddle

- Closed Stirrup Bar
- Seat Length 42cm (16 1/2")
- 19mm (3/4") Billet strap
- Weight 750gm approx

- Black 686831
- Blue 686832
- Red 686837



1kg Patent Race Saddle

- Closed Stirrup Bar
- Seat Length 45cm (17 3/4")
- 19mm (3/4") Billet strap
- Weight 1kg approx

- Black 686841



1.25kg Patent Race Saddle

- Closed Stirrup Bar
- Seat Length 48cm (19")
- 19mm (3/4") Billet strap
- Weight 1.25kg approx

- Black 686581



1.5kg Patent Race Saddle

- Closed Stirrup Bar
- Seat Length 48cm (19")
- 19mm (3/4") Billet strap
- Weight 1.5kg approx

- Black 686591



Patent Lead Weight Bag - 300g

Sturdy synthetic patent material, with pockets for holding weights.

- Black 671501



Patent Lead Weight Bag - 600g

Sturdy synthetic patent material, with pockets for holding weights.

- Black 671521



Note: All weights are approximate and may vary.

GIRTHS & SURCINGLES



	Code	Colour	Backing	Material	Buckle	Length	Weight
Double Girth Elastic 2 ends	681005	Beige/Black	-	Elastic	22mm (7/8")	132cm	430gm
	681007	Beige/Black	-	Elastic	22mm (7/8")	144cm	450gm



	Code	Colour	Backing	Material	Buckle	Length	Weight
Tubular Cotton Girth	681025	Red/Blue	75mm (3")	Cotton & Elastic at one end	22mm (7/8")	122cm	350gm



	Code	Colour	Backing	Material	Buckle	Length	Weight
Exercise Girth - Elastic 1 End	681040	Beige	75mm (3")	PVC & Elastic at one end	22mm (7/8")	120cm	340gm



	Code	Colour	Backing	Material	Buckle	Length	Weight
Exercise Girth - Elastic 2 Ends	681052	Beige	75mm (3")	PVC & Elastic at two ends	22mm (7/8")	120cm	330gm
	681054	Beige	75mm (3")	PVC & Elastic at two ends	22mm (7/8")	132cm	370gm
	681056	Beige	75mm (3")	PVC & Elastic at two ends	22mm (7/8")	144cm	390gm



	Code	Colour	Backing	Material	Buckle	Length	Weight
Elastic Girth	681080	Beige/Black edge	50mm (2")	Elastic	16mm (5/8")	100cm	170gm



	Code	Colour	Backing	Material	Buckle	Length	Weight
Elastic Girth	681086	Beige/Black edge	75mm (3")	Elastic	16mm (5/8")	100cm	230gm
	681088	Beige/Black edge	75mm (3")	Elastic	19mm (3/4")	100cm	240gm
	681089	Beige/Black edge	75mm (3")	Elastic	19mm (3/4")	120cm	260gm
	681090	Beige/Black edge	75mm (3")	Elastic	22mm (7/8")	100cm	240gm
	681095	Beige/Black edge	75mm (3")	Elastic	22mm (7/8")	120cm	270gm



	Code	Colour	Backing	Material	Buckle	Length	Weight
Elastic Girth	681180	Red/Blue	50mm (2")	Elastic	16mm (5/8")	100cm	170gm

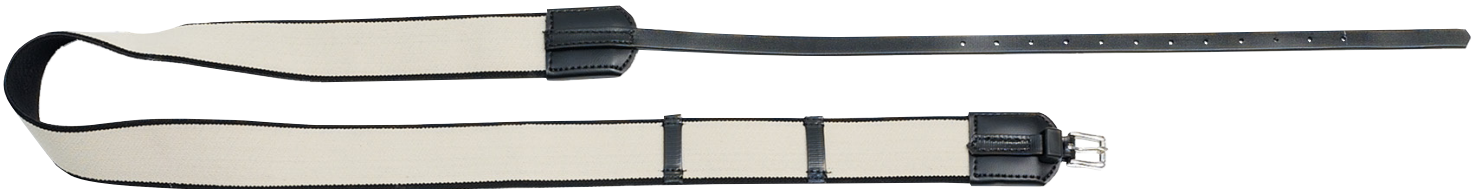
Note: All weights are approximate and may vary.



	Code	Colour	Backing	Material	Buckle	Length	Weight
Elastic Girth	681168	Red/Blue	75mm (3")	Elastic	19mm (3/4")	80cm	240gm
	681170	Red/Blue	75mm (3")	Elastic	22mm (7/8")	80cm	240gm
	681188	Red/Blue	75mm (3")	Elastic	19mm (3/4")	100cm	260gm
	681190	Red/Blue	75mm (3")	Elastic	22mm (7/8")	100cm	260gm



	Code	Colour	Backing	Material	Buckle	Length	Weight
Cotton Surcingle - Synthetic Strap	681210	Red/Blue	50mm (2")	Cotton & Elastic at one end	19mm (3/4")	228cm	220gm



	Code	Colour	Backing	Material	Buckle	Length	Weight
Elastic Surcingle	681215	Beige/Black edge	50mm (2")	Elastic	16mm (5/8")	185cm	190gm



	Code	Colour	Backing	Material	Buckle	Length	Weight
Elastic Surcingle	681225	Red/Blue	50mm (2")	Elastic	16mm (5/8")	185cm	200gm



	Code	Colour	Backing	Material	Weight
Ultra Light Girth/Surcingle Set	681435	Beige/Black/Grey	50mm (2")	Polypropylene & Elastic at one end	200gm

Beige/Black Edge Set

Elastic Girth (681080)	Elastic Surcingle (681215)	681355
Elastic Girth (681090)	Elastic Surcingle (681215)	681365
Elastic Girth (681095)	Elastic Surcingle (681215)	681370

Red/Blue Set

Elastic Girth (681180)	Elastic Surcingle (681225)	681555
Elastic Girth (681190)	Elastic Surcingle (681225)	681565

Note: All weights are approximate and may vary.

2 Buckle Plain Girth

Black "Ezi-care" PVC anti-gall waffle material with stainless steel buckles.

90cm	354136
95cm	354138
100cm	354140
105cm	354142
110cm	354144
115cm	354146
120cm	354148
125cm	354150
130cm	354152
135cm	354154
140cm	354156



2 Buckle Elastic Girth

Black "Ezi-care" PVC anti-gall waffle material with stainless steel buckles. With heavy duty elastic at one end for a snug and comfortable fit.

90cm	354436
95cm	354438
100cm	354440
105cm	354442
110cm	354444
115cm	354446
120cm	354448
125cm	354450
130cm	354452
135cm	354454
140cm	354456



Shaped Elastic Girth

Black "Ezi-care" PVC anti-gall waffle material with stainless steel buckles. Anatomical shape, with heavy duty elastic at one end for a snug and secure fit.

90cm	354636
95cm	354638
100cm	354640
105cm	354642
110cm	354644
115cm	354646
120cm	354648
125cm	354650
130cm	354652
135cm	354654
140cm	354656



2 Buckle Elastic Neoprene Girth

Removable black neoprene lining with breather holes for easier washing. Includes centre dees to attach a martingale and stainless steel buckles.

115cm	682474
125cm	682476
135cm	682478



Elastic Jump Girth

100mm (4") wide polyester webbing, lined with anti-gall EVA material. 19mm stainless steel solid roller buckles.

115cm	320gm	682504
125cm	330gm	682506
135cm	350gm	682508



EVA Girth Channel 95cm

Prevent galls, pinching, rubbing and protects girth from absorbing sweat.

682601



Fleece Girth Tube 75cm

Synthetic fleece, suits girths up to 100mm wide.

● Black	340011
○ White	340018



Wool Girth Tube

Wool, knitted on a polyester backing, suits girths up to 100mm wide.

60cm	340026
80cm	340028



PVC Girth Tube 85cm

PVC Waffle material, suits girths up to 100mm wide.

340041

Note: All weights are approximate and may vary.



Single Elastic Race Girth

- 75mm (3") Backing
- 19mm (3/4") Buckles

● Black	80cm	110gm	681991
● Black	90cm	130gm	682001
● Royal Blue	90cm	130gm	682002
● Red	90cm	130gm	682007
○ White	90cm	130gm	682008
● Black	100cm	140gm	682011

Double Elastic Race Girth

- 75mm (3") Backing
- 19mm (3/4") Buckles
- 250gm Weight

● Black	100cm	682051
● Royal Blue	100cm	682052
● Red	100cm	682057
○ White	100cm	682058

Double Elastic Race Girth

- 75mm (3") Backing
- 19mm (3/4") Buckles
- 280gm Weight

● Black	115cm	682061
● Royal Blue	115cm	682062
● Red	115cm	682067
○ White	115cm	682068



Double Elastic Race Girth

- 75mm (3") Backing
- 22mm (7/8") Buckles

● Black	100cm	260gm	682081
● Black	115cm	300gm	682091

Double Elastic Race Girth

- 100mm (4") Backing
- 19mm (3/4") Buckles
- 110cm Length
- 330gm Weight

● Black	682111
---------	---------------

Double Elastic Race Girth

- 100mm (4") Backing
- 22mm (7/8") Buckles
- 110cm Length
- 360gm Weight

● Black	682151
---------	---------------



Single Elastic Race Surcingle

- 75mm (3") Backing
- 19mm (3/4") Buckles

● Black	90cm	140gm	682291
● Black	100cm	150gm	682301
● Royal Blue	100cm	150gm	682302
● Red	100cm	150gm	682307
○ White	100cm	150gm	682308
● Black	110cm	160gm	682311

Double Elastic Race Surcingle

- 75mm (3") Backing
- 19mm (3/4") Buckles

● Black	120cm	300gm	682351
● Royal Blue	120cm	300gm	682352
● Red	120cm	300gm	682357
○ White	120cm	300gm	682358
● Black	130cm	310gm	682361
● Royal Blue	130cm	310gm	682362
● Red	130cm	310gm	682367
○ White	130cm	310gm	682368

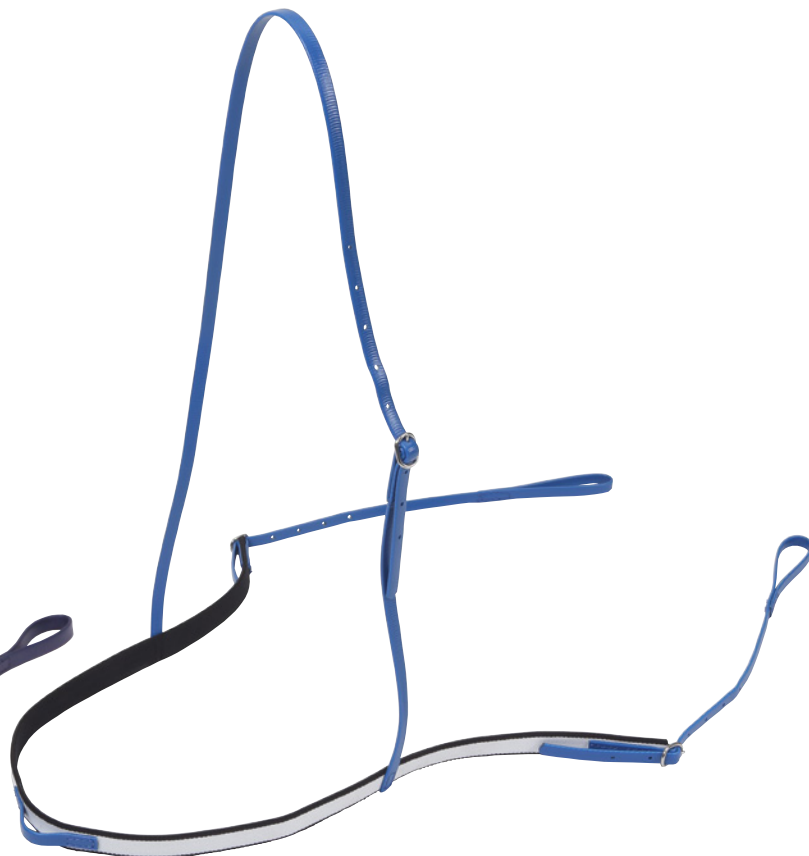
Note: All weights are approximate and may vary.



Elastic Race Breastplate

Made from 35mm wide, heavy duty elastic. Co-polymer coated webbing neck and girth straps. Includes martingale keeper at the front.

- Black 672011
- Dark Blue 672012
- Yellow 672014
- Red 672017
- White 672018
- Royal Blue 672022



Featherweight Breastplate

20mm Wide, super-lightweight elastic (120g). Specifically designed for race saddles. Coated webbing neck and girth straps and elastic breastplate. Includes martingale loop.

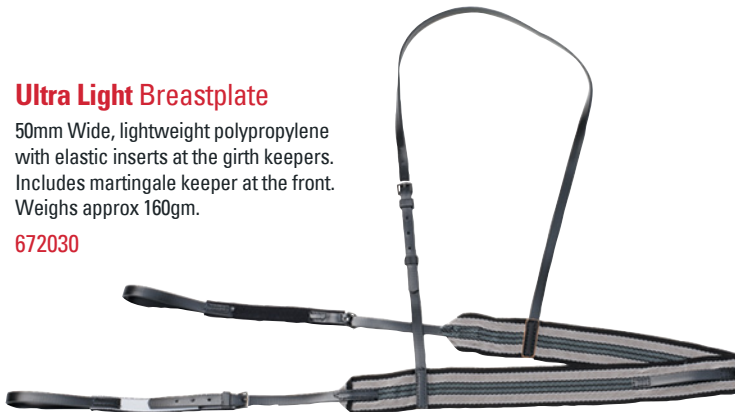
- Black 672101
- Royal Blue 672102
- Red 672107
- White 672108



Neo-lined Race Breastplate

50mm Webbing breastplate, lined with soft neoprene. Heavy duty elastic at each end.

- Black 672081
- Royal Blue 672082
- Red 672087



Ultra Light Breastplate

50mm Wide, lightweight polypropylene with elastic inserts at the girth keepers. Includes martingale keeper at the front. Weighs approx 160gm.

672030



Elastic Race Breastplate

35mm Wide, heavy duty red/blue elastic. Black coated webbing neck and girth straps. Includes martingale keeper at the front. Weighs approx 190g.

672051



NEW

Training Bib Martingale

Leather-like, matt finish strapping. Acts as a combination between a running martingale and Irish martingale. Detachable bib holds the reins closer together.

● Brown 675223



NEW

Training Running Martingale

Leather-like, matt finish strapping. Exerts downward pressure on the mouth if the horse lifts its head above the angle of control.

● Brown 675183



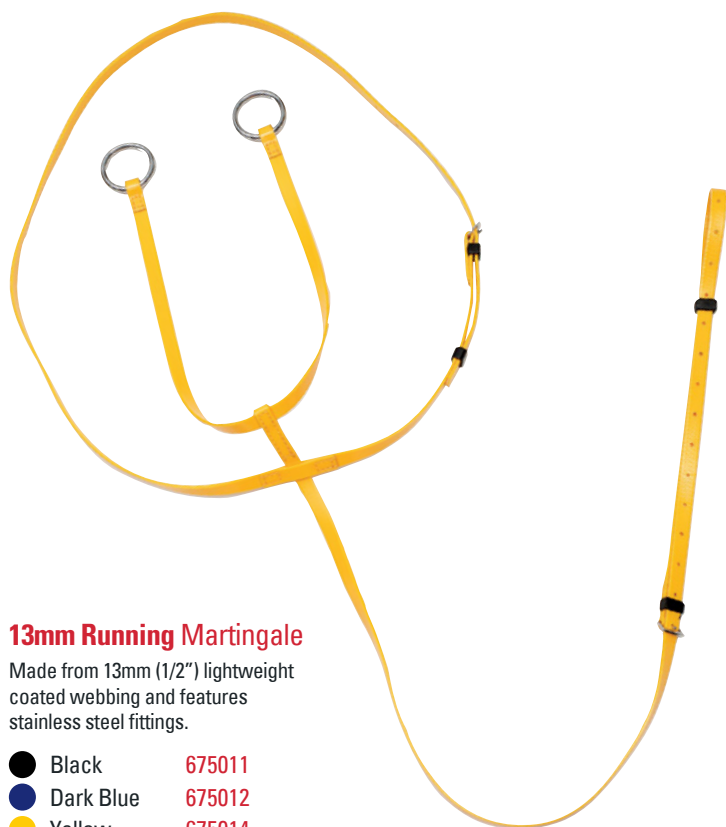
NEW

Training Market Harborough

Leather-like, matt finish strapping. Split straps are double the length and fed through the rings of the bit and connect reins dee ring. Complete with rubber grip reins.

● Brown 675203

MARTINGALES



13mm Running Martingale

Made from 13mm (1/2") lightweight coated webbing and features stainless steel fittings.

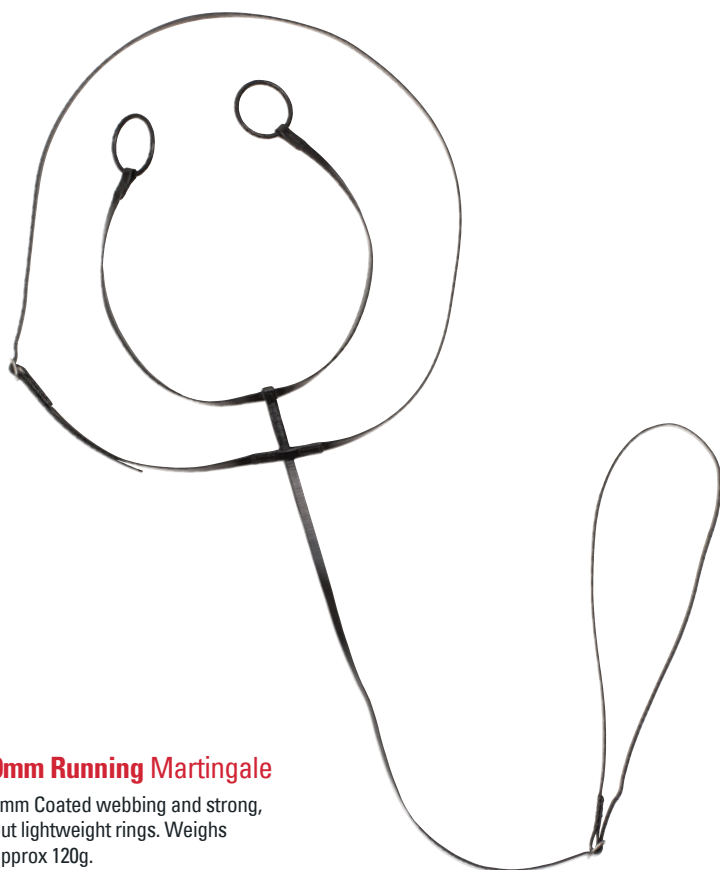
- Black 675011
- Dark Blue 675012
- Yellow 675014
- Red 675017
- White 675018



16mm Running Martingale

16mm (5/8") webbing, suitable for daily exercise or racing, with stainless steel fittings.

- Black 675161
- Blown 675163



9mm Running Martingale

9mm Coated webbing and strong, but lightweight rings. Weighs approx 120g.

- Black 672161



Bungee Martingale

Stainless steel clips to attach to the girth loop and bit rings. There is some adjustment in the straps that attach to the bit.

- Black 675141



Bib Martingale

Acts as a combination between a running martingale and Irish martingale. Detachable bib holds the reins closer together.

- Black 675041
- Brown 675043



Elastic Bib Martingale

Acts as a combination between a running martingale and Irish martingale. Detachable bib with elastic panel, holds the reins closer together.

- Black 675081



- Black 675031
- Dark Blue 675032
- Brown 675033
- Yellow 675034
- Red 675037
- White 675038
- Royal Blue 675052

Irish Martingale

Intended to keep reins closer together for more control. 21.5cm Overall length with rings.



NEW

Training Irish Martingale

Leather-like, matt finish strapping. Overall length with rings is 21.5cm.

- Brown 675193



NEW

Stretch Gel Martingale Stop

Sits across the junction of the neck strap and chest strap of a martingale to keep the neck strap in place.

- Black 916571



NEW

23mm Stretch Gel Rein Stops

Used with ring (running) martingales to prevent the ring travelling up to the bit where it can become caught, and offering more control. Sold as a pair.

- Black 196512



Neck Strap

13mm (1/2") Synthetic strapping. For greater stability or balance correction.

- Black 675001
- White 675008

STIRRUPS

NEW

Compositi X-Race

Stirrups

The ultimate, high performance, ergonomic stirrup. Made from extra-strong moulded polymer.

Unique, wider sole plate, provides greater comfort for all riding styles. Anti-slip sole for better grip.

Impact and moisture resistant, leaving it unaffected by lower temperatures. Light weight at only 100g per pair.

688581



Compositi Jockey Stirrups - 9cm

Extremely light jockey stirrups, only 95g per pair. Made from extremely strong DuPont plastic, approximately 15% stronger than similar style aluminium stirrups.

688609



Compositi Training Stirrups - 10cm

Lightweight, Made from extremely strong DuPont plastic, approximately 15% stronger than similar style aluminium stirrups.

688619



Safety Irons

Features a forward facing loop located on the outside of the foot. Allows the rider's foot to be easily released in case of a fall and prevent the rider being "hung up".

	Stainless Steel	Nickel Plated
10cm	894501	-
11cm	894502	-
11.5cm	894503	894013



2 Bar Stirrups

Basic stirrup pattern, characterised by rounded sides, perpendicular eye and small grips on the tread.

	Stainless Steel	Nickel Plated
10cm	891001	891501
11cm	891002	891502
11.5cm	891003	891503
12cm	891004	891504

Note: It is the purchaser's responsibility to ensure the product they select is approved for use by the organisation under which they operate.



Lightweight Stainless Steel Stirrups

Fine lines to achieve lighter weights. Suitable for larger feet. 11.5cm (4 1/2") tread. Approx 640gm.

688500



Aluminium Race/Exercise Stirrups

Larger tread size for larger feet. 12cm (4 3/4") tread. Approx 285gm.

688503



Lightweight Stainless Steel Stirrups

Made from lightweight aluminium, for when weight is extremely important.

10cm	160gm	688505
9cm	155gm	688509



Aluminium Race Stirrup PVC Tread

A lightweight aluminium stirrup with PVC cover over tread for added grip.

10cm	250gm	688515
9cm	270gm	688516



Balance Race Stirrups

Angled platform on the tread for more stability and to assist with keeping the heels down. 10cm (4") tread. Approx 140gm.

● Black	688541
● Blue	688542
● Red	688547
○ White	688548



Stainless Steel Peacock Irons

A variety of safety iron, designed so that the rubber ring will come away in the event of a fall and prevent the rider from being "hung up".

10cm	893501
11cm	893502
11.5cm	893503



Peacock Iron Rubbers

Replacement rubber rings to suit Peacock Stirrup Irons. Sold as a pair.

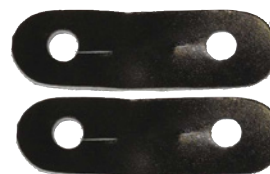
893520



2 Bar Stirrups Treads

Rubber treads to suit most 2 bar stirrup irons, including Safety Irons and Peacock Irons. Designed to offer additional grip.

	Black	White
10cm	905001	905005
11cm	905002	905006
11.5cm	905003	905007
12cm	905004	905008



Peacock Iron Leather Straps

Replacement rubber rings to suit Peacock Stirrup Irons. Sold as a pair.

893525

Note: It is the purchaser's responsibility to ensure the product they select is approved for use by the organisation under which they operate.

STIRRUP STRAPS



Patent Stirrup Straps

- 16mm (5/8") Width
- 75cm (30") Length
- 100gm Weight

● Black	688630
● Blue	688632
● Red	688637
○ White	688638



Long Patent Stirrup Straps

- 19mm (3/4") Width
- 91cm (36") Length
- 120gm Weight
- Black

688660



Synthetic Race Stirrup Straps

- 19mm (3/4") Width
- 91.5cm (36") Length
- 190gm Weight

● Blue	688832
● Red	688837



Synthetic Race Stirrup Straps

- Various sizes
- Black

Width	Length	Weight	
16mm (5/8")	75cm (30")	140gm	688730
16mm (5/8")	91.5cm (36")	160gm	688736
19mm (3/4")	75cm (30")	160gm	688830
19mm (3/4")	91.5cm (36")	190gm	688836
19mm (3/4")	107cm (42")	210gm	688842



Zilco PVC Stirrup Straps

- 25mm (1") Width
- 142cm (56") Length
- Black

903550



Zilco PN Stirrup Straps

- 25mm (1") Width
- Brown

112cm (46")	903511
127cm (50")	903516
142cm (56")	903521



Zilco PN Stirrup Straps

- 25mm (1") Width
- Black

112cm (46")	903510
127cm (50")	903515
142cm (56")	903520
160cm (62")	903530



Zilco Classic Stirrup Straps

- PU material
- 25mm (1") Width
- Black

125cm (49")	903594
145cm (57")	903596
155cm (61")	903598
165cm (65")	903600

Note: All weights are approximate and may vary.





Zilco 25mm PN Headstall

Flexible over high temperatures, with increased abrasion resistance. Sensitive feel while resistant to tears and cracks. Fully washable.

	Cob	Full Size
● Black	544561	544581
● Dark Blue	544562	544582
● Yellow	544564	544584
● Dark Green	544565	544585
● Red	544567	544587
○ White	544568	544588
● Royal Blue	544572	544589

Zilco 19mm PN Headstall

Same as the 25mm model, more suited to horses with a delicate head shape for a finer look. Popular for yearling sales.

	Pony	Cob	Full Size
● Black	544611	544641	544671
● Dark Blue	544612	544642	544672
● Red	544617	544647	544677
○ White	544618	544648	544678

Muzzle With Straps

Made from strong, moulded plastic with PVC coated webbing straps. One Size.

875025



Swimming Lead

6.25m long, heavy PN lead with hand loop and 32mm solid brass snap. Popular for swimming horses.

● Black	548001
---------	--------

Zilco Race Day Lead

With hand loop and built-in double clip, suitable with anti-rearing bits and in-hand bridles. 2.5m Long and 19mm Nickel Plated Snap.

● Black	547001
● Dark Blue	547002
● Red	547007
○ White	547008
● Royal Blue	547009

Bit Buckle Straps

13mm wide synthetic strap, attaches an anti rearing bit to a halter.

● Black	547211
---------	--------



Brass Walsall Argosy Chain

Allows for interchangeable fittings.

Pony 987504
Full 987505



Nickel Plate Argosy Chain

Snap clips. Allows for interchangeable fittings.

987500



Zilco Double Clip

Made from Zilco's SFL webbing with Solid Brass snaps.

● Black 547011
○ White 547018



Lead Chain

Nickel Plate, Brass Plate and Solid Brass lead chains that to fit any lead with the facility to interchange it's fittings.

	A Nickel Plate	B Brass Plate	C Solid Brass
18"	987510	987530	987541
24"	987515	987535	-
30"	-	987540	-



PN Lead Solid Brass Chain

Strong 2.4m PN lead with hand loop. 60cm Solid Brass chain.
547031



A



B



Puffer Pad

Made with a cotton drill outer and 800g polyester fibre fill for superior padding.

Standard size:
65cm wide x 48cm drop.

Long Size:
65cm wide x 57cm drop.

A Standard Size

- Neon Yellow 835694
- Neon Orange 835697
- Royal Blue 835702
- Burgundy 835710
- Black 835711
- Navy 835712
- Yellow 835714
- Forest Green 835715
- Purple 835716
- Red 835717
- White 835718
- Sky Blue 835719

B Long Size

- Black 835721
- Navy 835722
- Forest Green 835725
- Red 835727
- Royal Blue 835732

Gel-Lite Pad

With the impact and pressure absorption properties of traditional gel pads, but up to 80% lighter. Can be used under all types of saddles and are machine washable. Approx weight: 530g

831002



EVA Foam Saddle Pad

Made from EVA - a light material which is similar to that used in orthotics. Fully moulded and anatomically shaped, designed to prevent pressure points under the saddle.

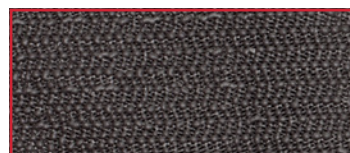
831012



Airflow Trackwork Saddle Pad

Made from a bonded and padded mesh top, with breathable porous polyester filling and non-slip lining. Features reflective binding for high visibility. 66cm wide x 37cm drop.

837442



Non-Slip Material

Non-Slip Featherweight Pad

Secures and grips the saddle in place without adding any weight.

Small - 45cm wide x 25cm drop 837511

Medium - 55cm wide x 30cm drop 837512



Ice Hock Boots

Helps reduce heat and swelling at the front and back of the hocks. Individual pillows of gel help ensure flexibility and even coverage of cold when frozen.

With zip up carry bag, each measures 43cm x 30cm when laid flat. Set of 2.

399060



Zilco Ice Boots

Prevents injury and significantly reduces swelling and soreness, to speed up recovery. Machine washable, fleece lined boots, with removable inserts.

399051



Ice Boot Removable Insert

Sold as each.

399050



Economy Neoprene Skid Boots

Thick neoprene, quick and easy to apply. The shape allows freedom of movement. Tough plastic cup protects the back of the fetlock. Set of 2.

396655



Neoprene Bumper Boots

Thick neoprene fabric and tough plastic cup protects the back of the fetlock joint. Double hook & loop closures, over-stitched edges to prevent fraying. Set of 2.

396911



Defender Shipping Boots

Made from 1200 Denier polyester ripstop material with nylon lining. Thick padding for superior protection. Navy with Light Blue/Red/Navy Trim. Set of 4, with reusable carry bag.

Pony/Cob 396104

Full Size 396106



Zilco Sling Boots

Provides an excellent fit with it's wraparound design. Encapsulates and supports the tendon and fetlock joint. Thick construction ensures protection against hard knocks. Set of 2.

Medium 399025

Large 399026

Ribbed Pull-On Bell Boots

Extremely easy to fit due to the soft pliable, ribbed rubber. Set of 2.

- Black No 2 391621
- Black No 3 391631
- White No 2 391628
- White No 3 391638



Leather Pastern Boots

Leather boot with neoprene lining, to protect the pastern. Stainless steel buckles and Zilco co-polymer coated webbing straps. Set of 2. Medium size. 395065

Economy Neoprene Skid Boot

Ribbed Rubber with touch tape straps. Set of 2.

- Black No 2 391012
- Black No 3 391013
- White No 1 391021
- White No 2 391022
- White No 3 391023



Fleece Bell Boots

Ribbed rubber with touch tape straps and fleece protection for the coronet and pastern. Set of 2.

- Black Medium 391321
- Black Large 391331
- White Medium 391328
- White Large 391338



Smooth Bell Boots

Smooth rubber with touch tape straps. Set of 2.

- No 2 391042
- No 3 391043



Sprint Pull-on Bell Boots

Extremely easy to fit due to the soft pliable, smooth rubber. Set of 2.

- No 1 391711
- No 2 391721
- No 3 391731



Crinkle Neck Bell Boot

High crinkle neck for more stretch and ease of fitting. Hoof section is made from smooth rubber. Set of 2. Number 2 size.

391501



Goose Neck Bell Boots

Extremely easy to fit due to the soft pliable rubber. High neck to give protection to the pastern, as well as the coronet and heel. Set of 2. Number 2 size.

391521



WRAPS

Zilco Towelling Leg Wraps

Cotton covered, towelling lined leg wraps with 25mm channel quilt, prevents creasing and minimises tendon irritation. Set of two. Measures 43cm x 31cm.

Small 114540
Large 114541



Zilco Foam Leg Wraps

Laminated polyester foam with over-locked edges. Soak in cold water and freeze to make a cold compress. Ideal for use under bandages. White on one side, black on reverse. Set of two. Measures 44cm x 30cm.

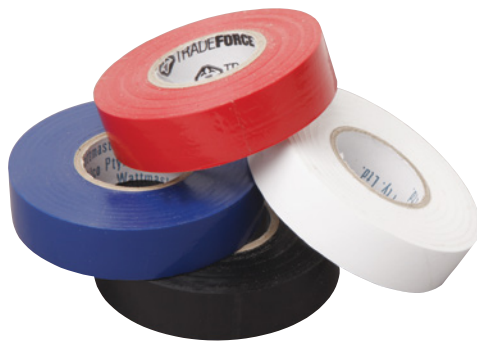
Small 114510
Large 114520



PVC Bandage Tape

Very popular for securing bandages and horse boots. 18mm x 20 metre roll.

● Black 115011
● Royal 115012
● Red 115017
○ White 115018



Aintree Acrylic Nylon Bandage

Ribbed with good stretch and support. Each measures 10cm x 2 metres. 50% Acrylic, 30% Nylon, 20% Rubber. Set of 4.

● Black 110521
● Royal 110522
● Red 110527
○ White 110528



Zilco Neoprene Tail Wrap

Thick neoprene wrap with touch tape closure. Protects the horse's tail while travelling or during service.

116005



Zilco Padded Tail Wrap

Cotton tail wrap padded with polyester fibre fill. Four touch tape fasteners for quick and easy application.

116101

Zilco Polo Bandages

Set of 4 Polar Fleece bandages packed in a handy zip up bag for transport and storage.

● Black 110631
○ White 110638



Zilco Sureflex Bandage

Self-adhesive bandage - no need for clips or fasteners. Provides controlled compression and firm support. Single bandage per pack.

● Black 113011
● Green 113015
● Purple 113016
● Red 113017
○ White 113018
● Yellow 113019
● Royal Blue 113022
● Pink 113027
Mixed Box of 20 113030



Reflective Piping



**Oscar Select
Helmet**

- Stylish matt finish with grey piping
- Removable mesh lining for increased airflow and ease of cleaning
- Sleek channel design for optimum airflow and cooling
- Unique dial adjustment to help achieve the perfect fit
- Reflective piping for added safety
- Each helmet comes individually packaged in an attractive display box.

	Black	Navy
S 48-52	385304	385314
M 52-56	385305	385315
L 57-61	385306	385316



**Oscar Lite
Sports Helmet**

- Modern, matt finish single-piece shell
- Removable mesh lining for increased airflow and ease of cleaning
- Sleek channel design for optimum airflow and cooling
- Unique dial adjustment to help achieve the perfect fit
- Light weight at only 430g

S 48-52	385254
M 52-56	385255
L 57-61	385256



**Oscar Sentry
Helmet**

- Shiny white exterior
- Removable mesh lining for increased airflow and ease of cleaning
- Sleek channel design for optimum airflow and cooling
- Unique dial adjustment to help achieve the perfect fit
- Individually packaged and includes a storage pouch for added protection.

M 52-56	385415
L 57-61	385416



Note: It is the Rider's responsibility to ensure that the helmet they choose is approved for use by the organisation under which they are riding.

GOGGLES & GLOVES



Kroop's 13-Five Goggles

The low profile lens fits over the brow, but under the helmet. Made with a soft, multi-layer foam, the spherical lens gives an unobstructed, distortion free view.

The headband is made with a silicone bead to hold tight after adjustment. 100% UV blocking, and impact resistant. Supplied with microfibre carrying case that can be used to clean the lens.

○ Clear	300330
● Grey	300331
● Blue	300332
● Amber	300333
● Flare	300337



A

B



Zilco Goggles

New design, made with the headstrap further forward. Allowing to seal properly against the face, even when used with wider, European style helmets. Flexible and durable, high clarity lens with multiple breather holes to prevent fogging.

Smoke lens provides 100% UVA and UVB protection.

	A Clear Lens	B Smoke Lens
● Black	300001	300061
● Royal Blue	300002	300062
● Brown	300003	300063
● Yellow	300004	300064
● Green	300005	300065
● Red	300007	300067
○ White	300008	300068
● Orange	300010	300070
● Grey	300011	300071
● Light Blue	300012	300072
● Pink	300017	300077
Assorted 12 Pack	300029	300089

Mesh Goggles

Made from mesh, moulded to give good eye clearance. Elastic head strap keeps them in place.

304000



Jodz Deluxe Work Glove

Durable and pliable leather gloves in natural leather with touch tape wrist adjustment. Sold as a pair.

XS	291403
S	291404
M	291405
L	291406
XL	291407



Jodz Leather Roping Gloves

Economy all leather work glove. Sold as a pair.

XS	292003
S	292004
M	292005
L	292006
XL	292007



Jodz Airmesh Gloves

Synthetic suede palm with polyester air mesh back that really breathes. A great choice for summer. Sold as a pair.

S	292454
M	292455
L	292456



Jodz Tacky Gloves

Polyester spandex back. Supple tackified chrome leather palm ensures good grip, even in the wet. Sold as a pair.

XS	293483
S	293484
M	293485
L	293486
XL	293487
XXL	293488



Padded Race Whip

Made to comply with the rules of the Australian racing authorities. Acceptable for use in other countries where padded whips are required. Standard Grip has a finer grip than the Golf Grip Model.

- A** Golf Grip 970801
- B** Standard Grip 970821



Zilco Canvas Gear Bag

Heavy canvas gear bag with red trim and handles. The handles wrap all the way around the bag for added strength. Features a hard-wearing nylon zip with metal pull-tab.

XL Measures: 75cm x 36cm x 36cm.
XXL Measures 90cm x 50cm x 50cm.

- A** XL 101105
- B** XXL 101107



Zilco Cap

Featuring 3D embroidery, great for promotional and sponsorship items. Structured peak and touch-tape strap at the back to ensure optimum comfort and fit.

- Black 381031
- Red 381037



Waterproof Gear Bag

Made from heavy duty waterproof vinyl with strong webbing handles that wrap all the way around and touch tape comfort grip closure. Includes a D-ring which the zip can be padlocked for security when travelling. Measures: 35cm x 45cm x 85cm.

101125

Note: It is the purchaser's responsibility to ensure the product they select is approved for use by the organisation under which they operate.



Zilco International Pty Ltd

PO Box 126 Concord West,
NSW 2138
AUSTRALIA
Tel: (02) 8765 9999
Fax: (02) 8765 9977
Email: sales@zilco.com.au

Zilco NZ Ltd

PO Box 19808 Woolston,
Christchurch 8241
NEW ZEALAND
Tel: (03) 381 0270
Fax: (03) 381 0276
Email: sales@zilco.co.nz

Zilco Europe Ltd

Unit 6/7 The Dairy
Bloxham Grove Farm
Banbury, Oxfordshire, OX15 4LL
ENGLAND
Tel: +44 (0) 1844 338 623
Email: sales@zilcoeurope.com



Available at your nearest Zilco stockist: